

NORTHEAST BRANCH BASIN SEWER SYSTEM REHABILITATION PROJECT

Project Nos. **CICKRLLLR6992B20**
& **CICKRLLLR6992C20**

April 27, 2022

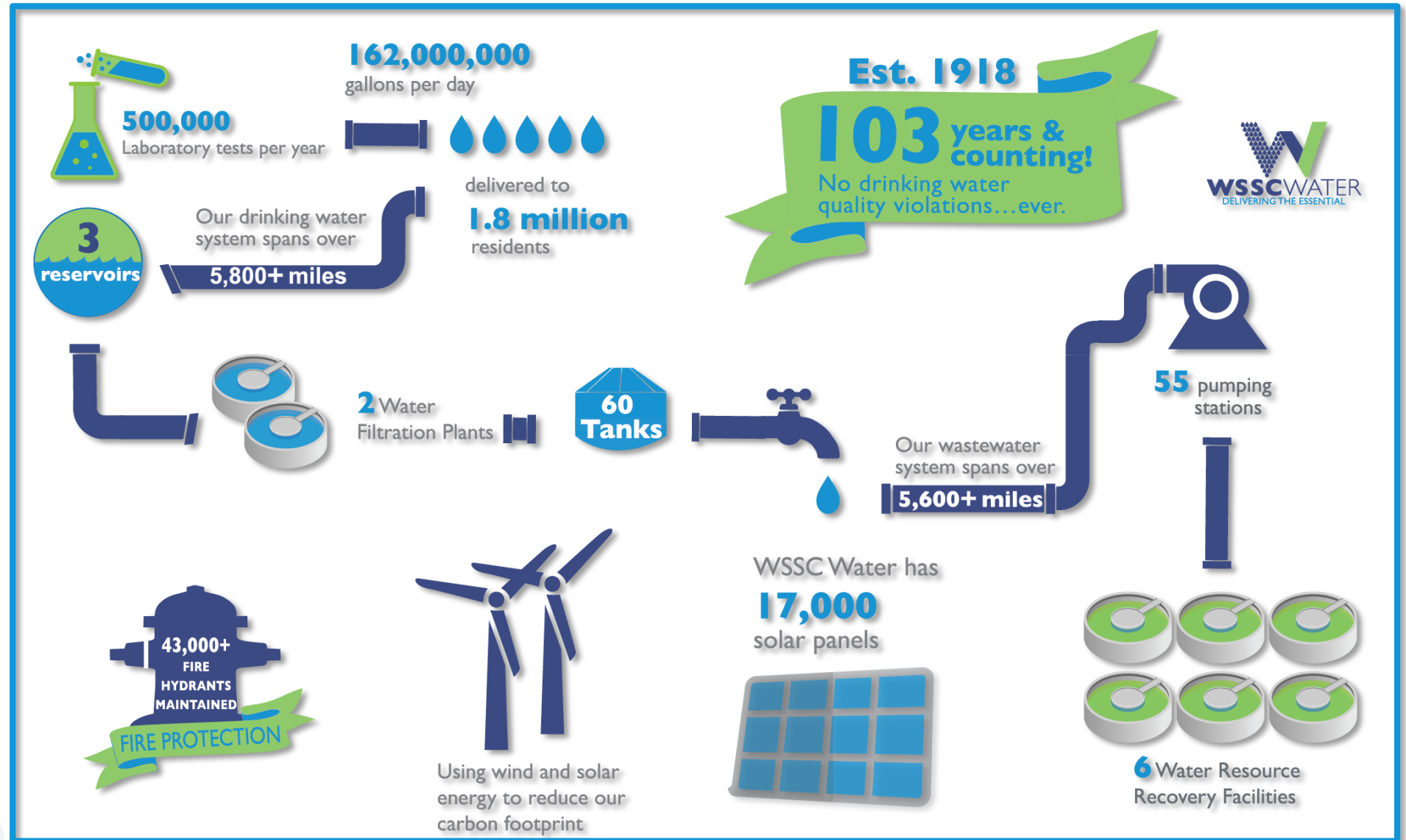
AGENDA

- Introduction to Project Team
- WSSC Water Overview
- Sewer Rehabilitation Program Overview
- Project Overview
- Project Map
- Sewer Rehab Methods
- Estimated Construction Schedule
- Operational Changes In Response To Covid-19
- What to Expect During Construction
- Project Summary
- Questions & Answers

Project Team

- Lawrence Cumberbatch, Design Project Manager
301-206-8892, Lawrence.Cumberbatch2@wsscwater.com
- April Wilt, Technical Contracts Supervisor (Construction)
301-206-4307, April.Wilt@wsscwater.com
- David Wilkins, Customer Advocate
301-206-4371, David.Wilkins@wsscwater.com
- Johnson, Mirmiran and Thompson, Inc., Design Consultants

WSSC Water Overview



Sewer Rehabilitation Program Overview

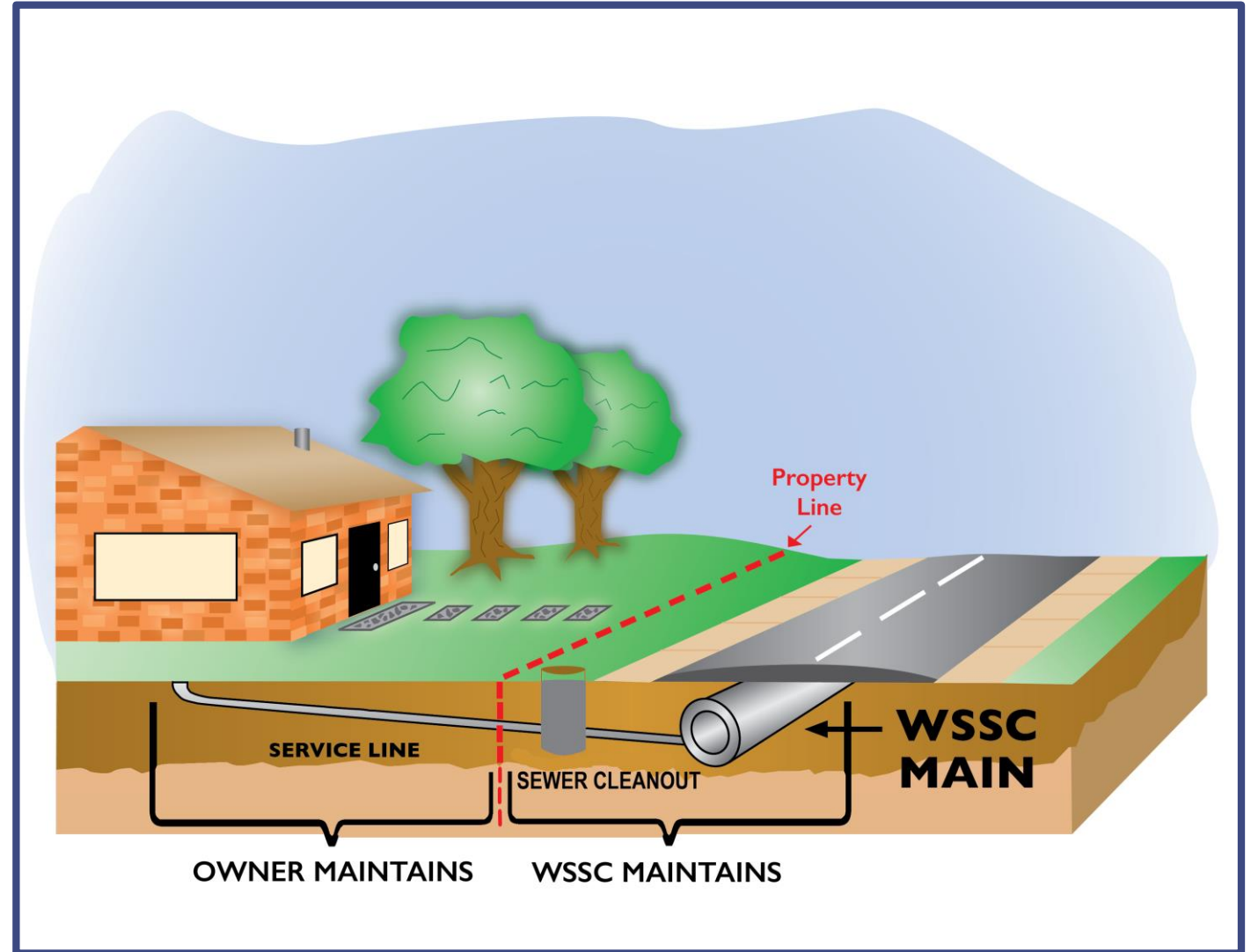
- WSSC Water is strategically replacing and rehabilitating our aging water and sewer pipes throughout our service area, a part of our effort to enhance service and reliability to our customers.
- Provide for correcting structural deficiencies in sewer mains that may result from soil settlement, root penetration, or corrosion, and often contribute to sewage overflows and backups into homes.
- The completed projects will extend the life of the sewer pipes by at least 50 years.

Project Overview

- Sewer pipes and manholes will be rehabilitated using primarily Trenchless methods.
- Pipes and manholes that are in very poor condition will require excavation to replace or repair them.
- Approximately **2.82** miles of sewer pipes will be rehabilitated or replaced;
- Approximately **24** manholes will be rehabilitated or replaced.
- Sewer house service connections (up to property lines) will be replaced and reconnected where sewer pipes are replaced.
- WSSC Water will restore areas affected by construction.

Project Overview

- New sewer mains will be installed and rehabbed within the roadways
- New house connections (sewer service lines) will be installed up-to the property line as well as cleanouts
- WSSC Water coordinates with local and state agencies, as well as other utilities for all planned work to avoid potential conflict and minimize disturbances to neighborhoods.

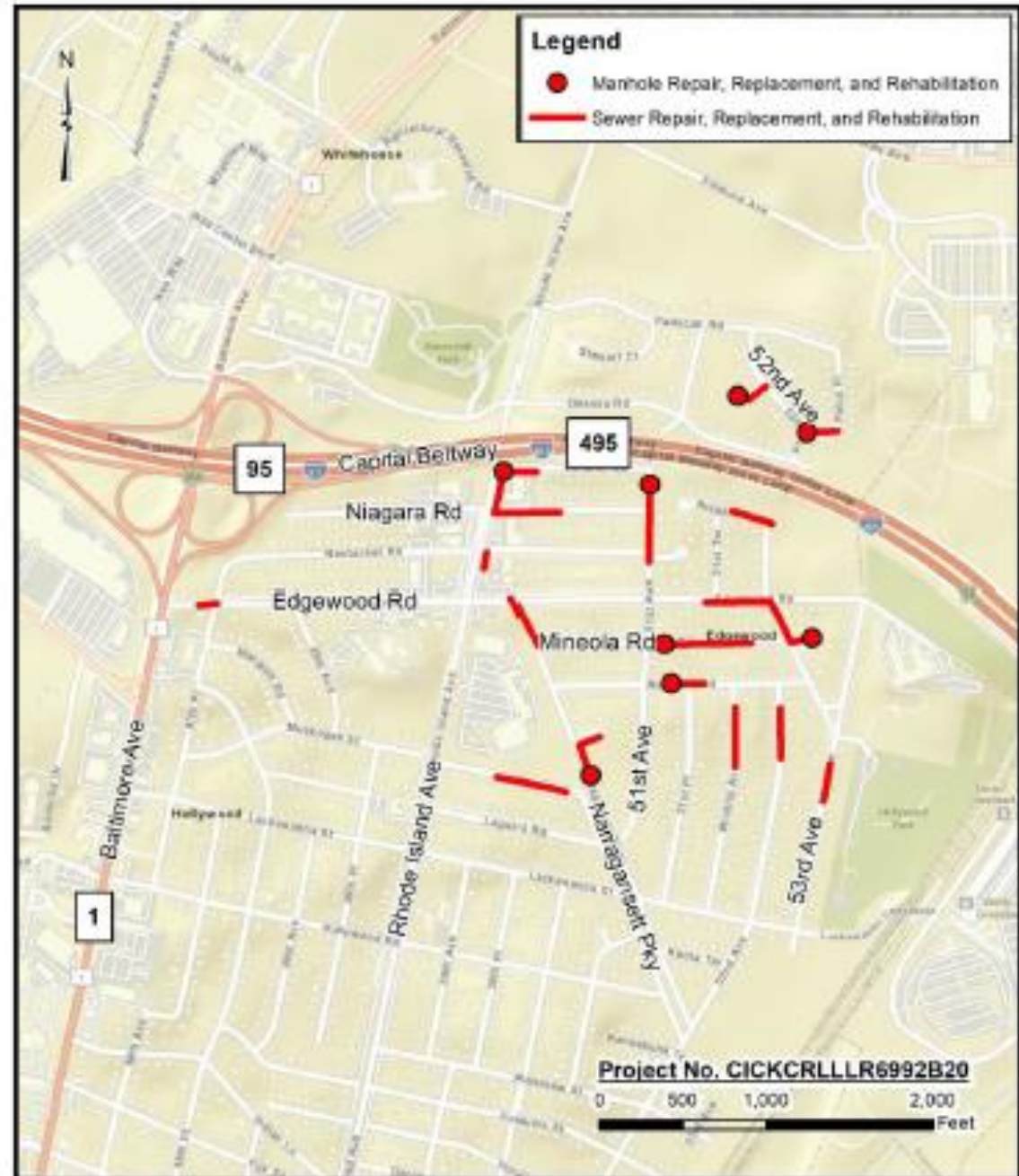


Project Map

NO. CICKRLLLR6992B20

Directly Impacted Streets

- | | |
|------------------|----------------------|
| 47TH PLACE | MUSKOGEE STREET |
| 51ST AVENUE | NANTUCKET ROAD |
| 51ST PLACE | NARRAGANSETT PARKWAY |
| 51ST TERRACE | NIAGARA PLACE |
| 52ND AVENUE | NIAGARA ROAD |
| 52ND PLACE | ONTARIO ROAD |
| 53RD AVENUE | PALCO PLACE |
| BALTIMORE AVENUE | RHODE ISLAND AVENUE |
| EDGEWOOD ROAD | WICHITA AVENUE |
| MANGUM ROAD | ALBION ROAD |
| MINEOLA ROAD | |

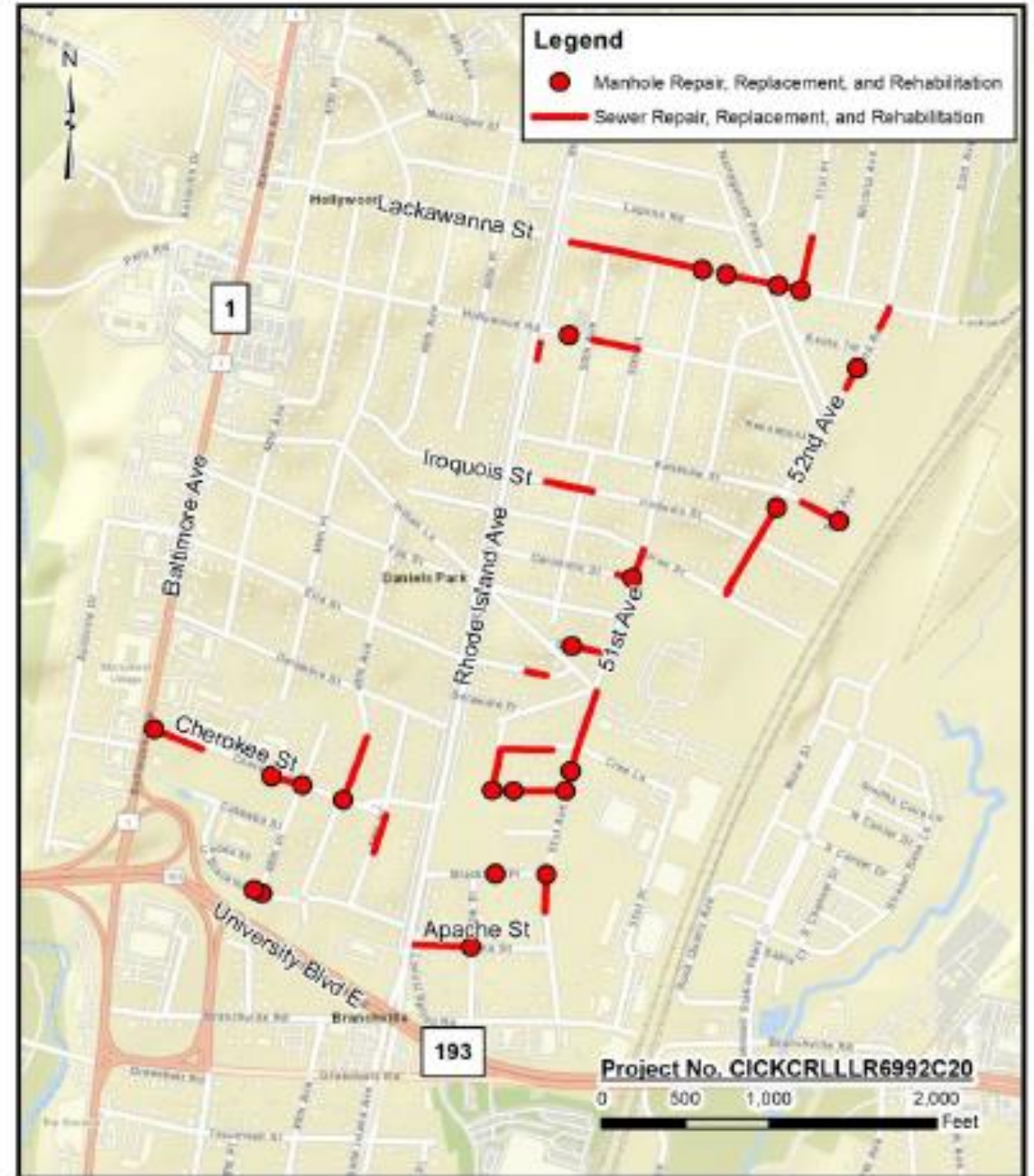


Project Map

NO. CICKRLLLR6992C20

Directly Impacted Streets

48TH PLACE	CREE LANE
49TH AVENUE	DELAWARE STREET
49TH PLACE	ERIE STREET
50TH AVENUE	EUTAW PLACE
50TH PLACE	GERONIMO STREET
51ST AVENUE	HOLLYWOOD ROAD
51ST PLACE	HURON STREET
52ND AVENUE	INDIAN LANE
53RD AVENUE	IROQUOIS STREET
APACHE STREET	KENESAW STREET
BALTIMORE AVENUE	LACKAWANNA STREET
BLACKFOOT PLACE	LOCUST SPRING ROAD
BLACKFOOT ROAD	NARRAGANSETT PARKWAY
CHEROKEE STREET	RHODE ISLAND AVENUE
CHEYENNE PLACE	



Sewer Repairs Types: Open Trench



Sewer Repairs Types: Trenchless Technology



Sewer Repairs Types: Manhole Rehabilitation



Estimated Construction Schedule

- Expected Construction Start Date: Fall 2022
- Estimated Construction Duration: 12 months
- Expected Construction Finish Date: Fall 2023 (Weather Permitting)

Operational Changes in Response to Covid-19

- WSSC Water has implemented protocols that align with recommendations from local, state, and federal public health authorities.
- Working to minimize impact
 - Facial masks (when indoors) and physical distancing
- All WSSC Water employees and contractors are required to refrain from coming to work if displaying symptoms of COVID-19.
 - We have implemented robust internal contact tracing and quarantine requirements.
- Earlier notification to customers
 - Contact via handouts



What to Expect During Construction

- Anticipated Work schedule: 9:00 a.m. to 3:00 p.m., Monday-Friday
 - Conditions at some locations may require different work hours
 - Residents will be notified at least 2 days prior to all construction activities
- Construction activities may include:
 - Marking locations of utilities
 - Field Inspections
 - Rehabilitation of sewer mains, manholes and laterals (primarily in the roadway)
 - Pavement restoration where digging is necessary
- Reliable sewer service will be maintained during construction



What to Expect During Construction

- Street parking will be limited on streets with active construction.
 - 48-hours advanced notification will be provided.
 - NO PARKING signs will be posted.
 - All roads will remain accessible at all times during construction. However, certain activities may require temporary closures and delays.
- Access from the public roadway to businesses and homes will be maintained at all times.
- Entry into homes is NOT required.
- Tree removal, only when necessary, pruning and/or stump removal.
 - New trees will be planted where trees needed to be removed
 - Trees on private property will not be removed

Traffic Impacts

- Certain construction activities may require temporary changes to traffic patterns
 - Traffic will be managed to minimize community disruptions
- Access will be maintained to homes during construction
 - Access into homes is **NOT** required
 - Access onto private property is generally **NOT** required
- Parking restrictions
 - WSSC Water will provide 48-hour advance (denoted by “No Parking” signs) notice prior to any parking restrictions
 - Any vehicles that have not been removed from the designated area will be towed to a nearby street at no cost to the owner.
- Final restoration of sidewalks, roadways and landscaping will take place within 90 days of construction completion.



Project Summary

- WSSC Water will be rehabilitating pipes, manholes, and some laterals.
 - Lateral work will not extend past the property line.
- WSSC Water is committed to minimizing the impact of construction.
- WSSC Water will restore all areas impacted by construction activities at the end of the project.
- We understand the inconvenience these types of projects can cause and appreciate your patience as we work to provide safe, seamless and satisfying water and sewer services, for our customers every day.
- Sign-up at www.wsscwater.com/CNS, to receive emails and/or text alerts so you can keep updated on work in your neighborhood.

