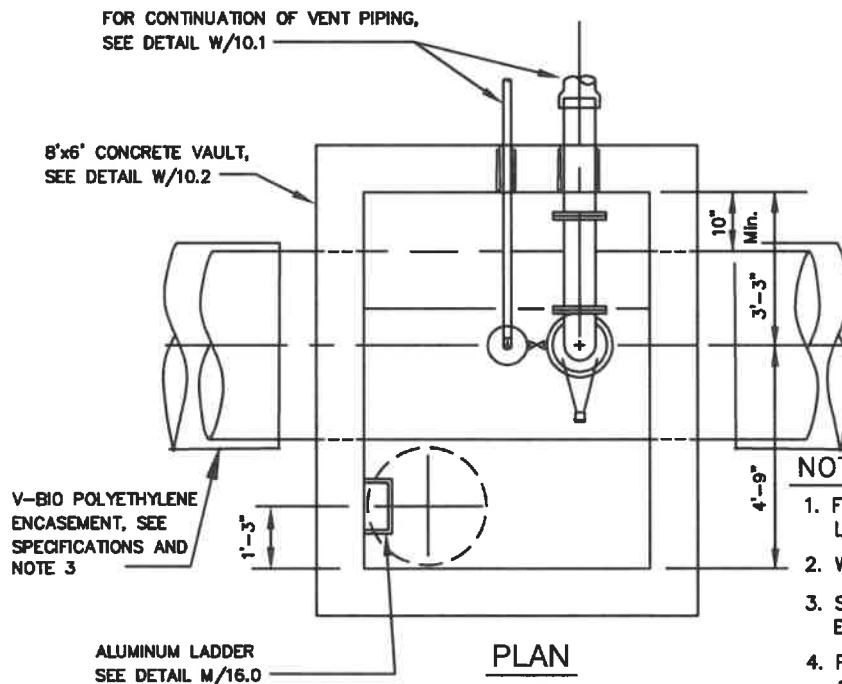
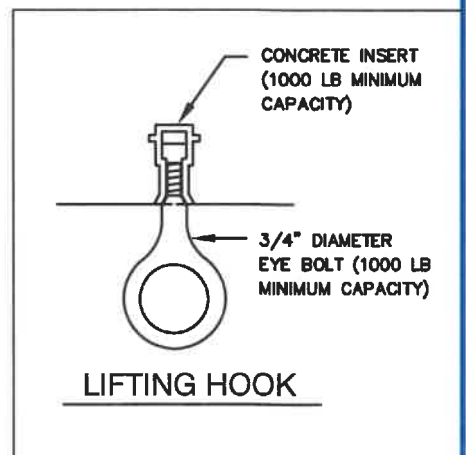


SECTION



PLAN



NOTES:

1. FOR VALVE AND PIPING SIZES AND LAYOUT, SEE DETAIL W/10.1
2. WELDED-ON CONNECTION, DETAIL W/10.1
3. SEE DETAIL W/2.8 FOR V-BIO POLYETHYLENE ENCASEMENT AT CONCRETE INTERFACE.
4. PROVIDE RUBBER ANNUAL HYDROSTATIC SEALING DEVICES FOR PIPE THROUGH WALL CONNECTIONS, SEE SPECIFICATIONS.

WASHINGTON
SUBURBAN
SANITARY
COMMISSION

APPROVED: 7-26-21
Mike Harmon
Chief Engineer

STANDARD DETAIL

AIR/VACUUM VALVE VAULT
ON 30-INCH DIAMETER
AND LARGER PIPES

W
10.0