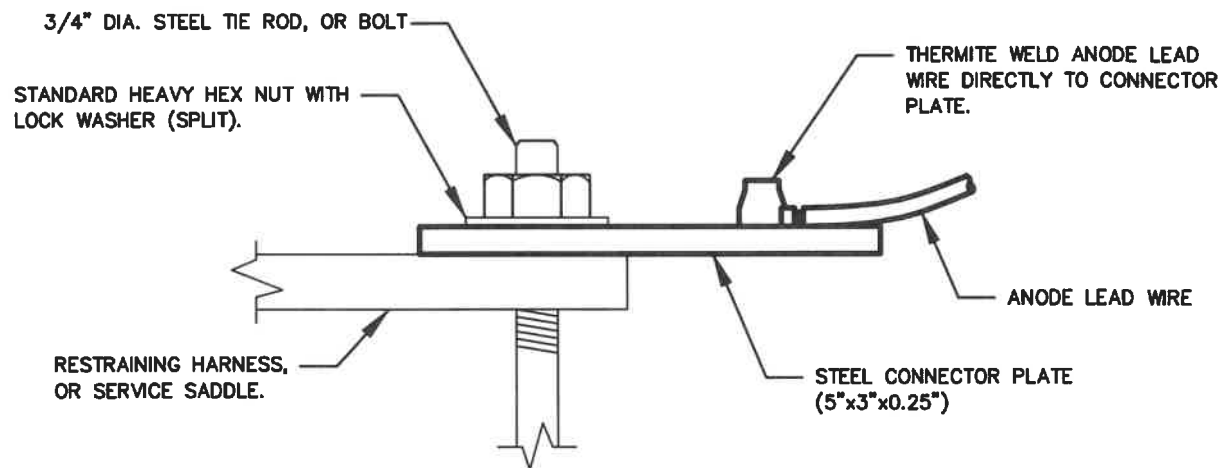


PLAN



SIDE VIEW

NOTES:

1. CONNECTOR PLATE TO BE THERMITE WELDED TO ANODE LEAD WIRE PRIOR TO ATTACHING CONNECTOR PLATE TO RESTRAINING HARNESS, TAPPING SADDLE, OR SERVICE SADDLE.
2. THERMITE WELDS SHALL BE COATED WITH A PREFABRICATED ONE PIECE PLASTIC CAP FILLED WITH ELASTOMETRIC MATERIAL, ROYSTON HANDY-CAP OR APPROVED EQUAL.

WASHINGTON
SUBURBAN
SANITARY
COMMISSION

APPROVED: 7-26-21

M. W. Harmon

Chief Engineer

STANDARD DETAIL

PVC AWWA C-900 PIPE
CONNECTOR PLATE

C
7.12