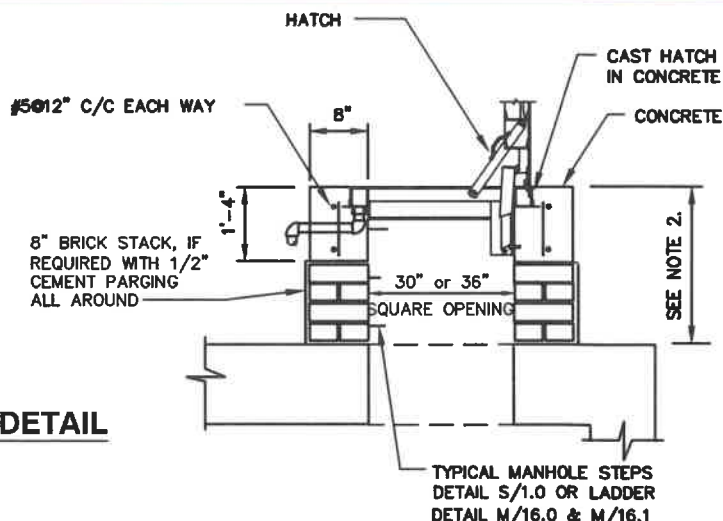
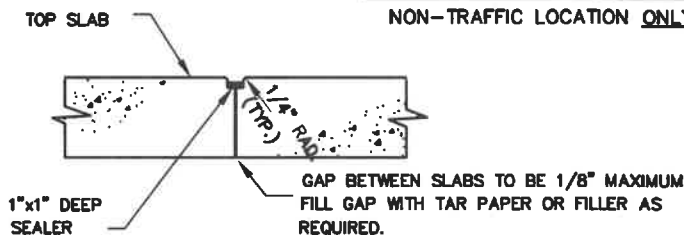


MANHOLE FRAME AND COVER STACK DETAIL



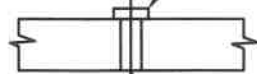
HATCH STACK DETAIL NON-TRAFFIC LOCATION ONLY

- NOTE:**
- DO NOT USE HATCHES WHERE VAULTS ARE LOCATED IN A STREET OR OTHER LOCATIONS SUBJECTED TO TRAFFIC
 - FOR MAXIMUM COVER OVER TOP SLAB SEE DETAILS W/2.4, W/2.4a, W/2.6, W/5.21, W/5.22, W/5.23, W/5.24, W/5.25 AND W/10.7.
 - FOR MINIMUM COVER OVER TOP SLAB. HATCHES 1'-4" MINIMUM AND FRAME AND COVERS 1'-3" MINIMUM.



SLAB JOINT DETAIL

PROVIDE RUBBER PLUGS AT ALL HOLES.

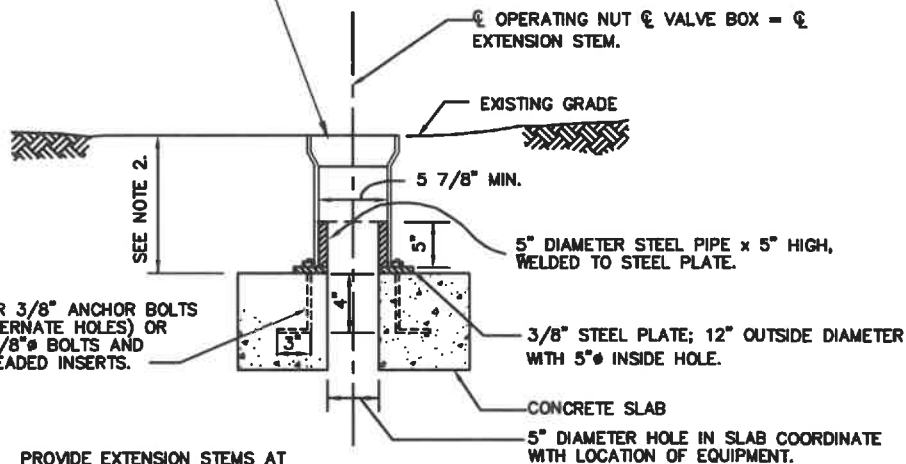


2" ϕ HOLE IN SLAB. SEE STANDARD DETAILS FOR LOCATION.

FOUR 3/8" ANCHOR BOLTS (ALTERNATE HOLES) OR 4-3/8" ϕ BOLTS AND THREADED INSERTS.

PROVIDE EXTENSION STEMS AT ALL VALVE BOXES.

USE STANDARD VALVE BOX COVER AND TOP SECTION, SEE DETAIL W/2.1 EXCEPT THAT LENGTH WILL VARY AS REQUIRED AND FLANGE SHALL BE OMITTED. EXCESS LENGTH IF ANY MAY BE CUT IN FIELD, USING STANDARD METHOD FOR CUTTING C.I. PIPE.



LIFTING HOLE DETAIL

VALVE BOX SLAB OPENING

WASHINGTON
SUBURBAN
SANITARY
COMMISSION

APPROVED: 7-26-21
Mike Harmon
Chief Engineer

STANDARD DETAIL
TOP SLAB DETAILS
FOR VAULTS

W
5.5