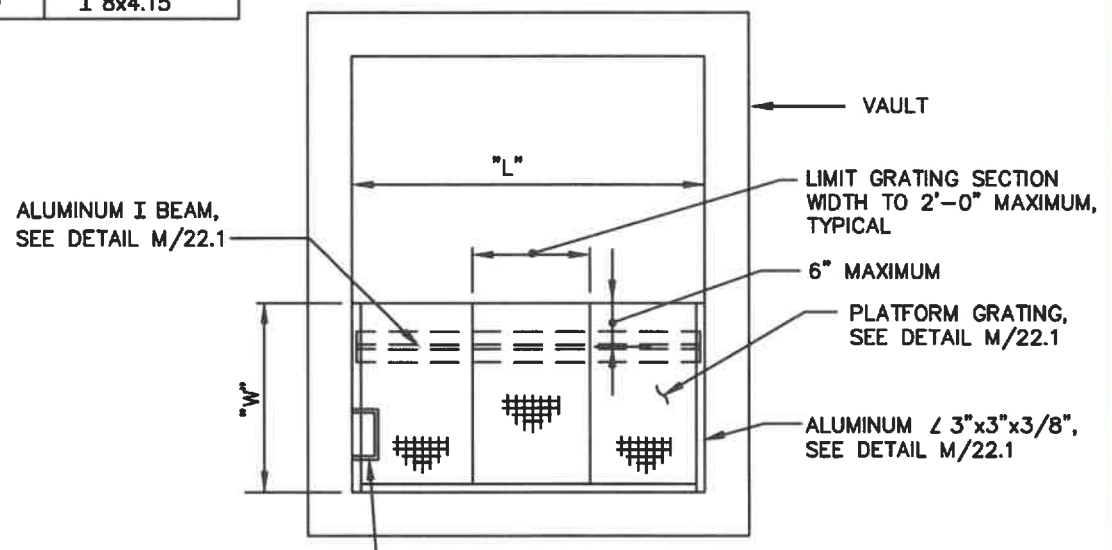


SECTION

ALUMINUM I BEAM


"W" MAXIMUM	"L" MAXIMUM	I BEAM
6'-0"	16'-0"	I 10x8.64
4'-0"	12'-0"	I 8x5.8
3'-0"	10'-0"	I 8x4.15



PLAN

GENERAL NOTES:

1. ALUMINUM STRUCTURAL MEMBERS SHALL BE ALUMINUM ALLOY 6061-T6 AND SHALL CONFORM TO ASTM B-308. ALUMINUM PLATES SHALL CONFORM TO ASTM B-209.
2. COAT ALUMINUM IN CONTACT WITH CONCRETE WITH AN EPOXY COATING SYSTEM, SEE SPECIFICATIONS.

WASHINGTON SUBURBAN SANITARY COMMISSION	APPROVED: <u>6/17/21</u>  Chief Engineer	STANDARD DETAIL ALUMINUM PLATFORM GRATING FOR VAULTS	<u>M</u> 22.0
--	---	---	------------------