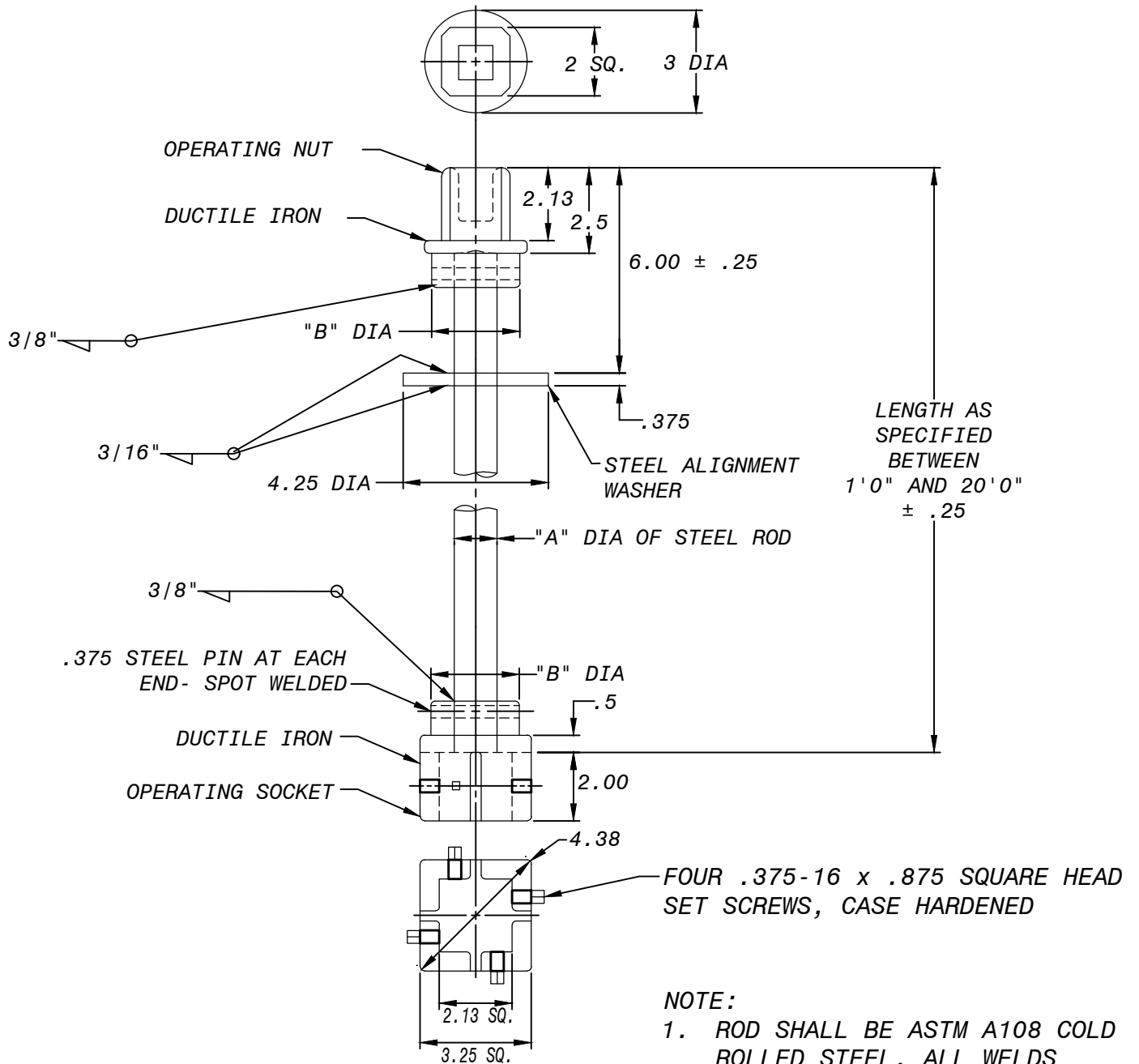


"A" DIAMETER OF STEEL ROD: 1-1/4"

"B" DIAMETER: 2"

APPLICABLE STOCK NO'S.

4840-0001-3  
THRU-0007-0



ALL DIMENSIONS ARE IN INCHES OTHERWISE SPECIFIED.

**TOLERANCES:**

ALL 2 PLACE DECIMALS ± .06  
ALL 3 PLACE DECIMALS ± .062

**NOTE:**

1. ROD SHALL BE ASTM A108 COLD ROLLED STEEL. ALL WELDS SHALL BE RADIUS 1/2"
2. APPROVED ALTERNATE DESIGN: KRAVITCH MACHINE CO. MODEL NO. GVENOXXCR
3. SHALL BE CLEANED AND COATED BY AN APPROVED PROCESS AND COATING(2 COATS)

WASHINGTON  
SUBURBAN  
SANITARY  
COMMISSION

REVISIONS:  
APPROVED: May 3, 2021 | 9:23 PM EDT  
DocuSigned by:  
*Jaime Garcia*  
B7DBE23469C84BD  
MATERIALS MANAGEMENT DIVISION MANAGER

PROCUREMENT AND MANUFACTURING DETAIL

**VALVE EXTENSION  
STEM FOR VALVE  
BOXES**

**P&M  
1.4**