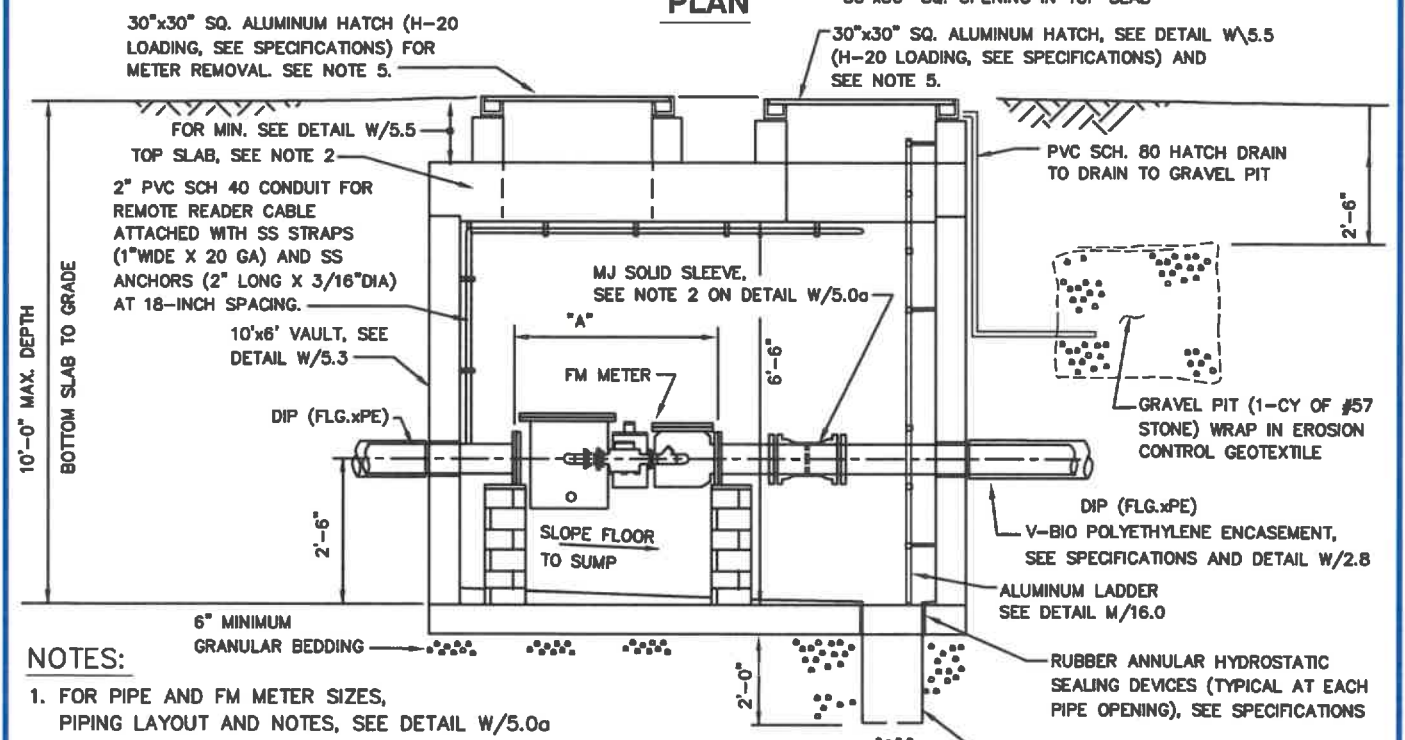


PLAN



ELEVATION

NOTES:

1. FOR PIPE AND FM METER SIZES, PIPING LAYOUT AND NOTES, SEE DETAIL W/5.0a
2. FOR TOP SLAB DETAILS, SEE DETAIL W/5.25.
3. FOR DIMENSION "A", SEE DETAIL W/5.0a.
4. FOR LOCATION OF BY-PASS PIPING, SEE DETAIL W/5.0a.
5. IF VAULT LOCATION IS LOCATED IN TRAFFIC AREA, USE 30" DIA. FRAME AND COVER AND SEE DETAIL W/5.0e.
6. FOR 12" DIP, USE 10" FM METER WITH 12" SERVICE CONNECTION AND 12" BY-PASS PIPING.
7. BENDS IN REMOTE READER CONDUIT NOT TO EXCEED 45' UNLESS USING A 90' SWEEP.
8. CONTRACTOR SHALL INSTALL REMOTE READER HOUSING, ALL CONDUIT AND WIRING. METER SERVICES SHALL INSTALL THE REMOTE READING DEVICE AND PERFORM FINAL WIRING TO THE METER.

WASHINGTON SUBURBAN SANITARY COMMISSION	APPROVED: <u>7-26-21</u> Chief Engineer	STANDARD DETAIL 10-INCH F.M. METER VAULT	W 5.0g
--------------------------------------------------	----------------------------------------------------	------------------------------------------------------------	-----------