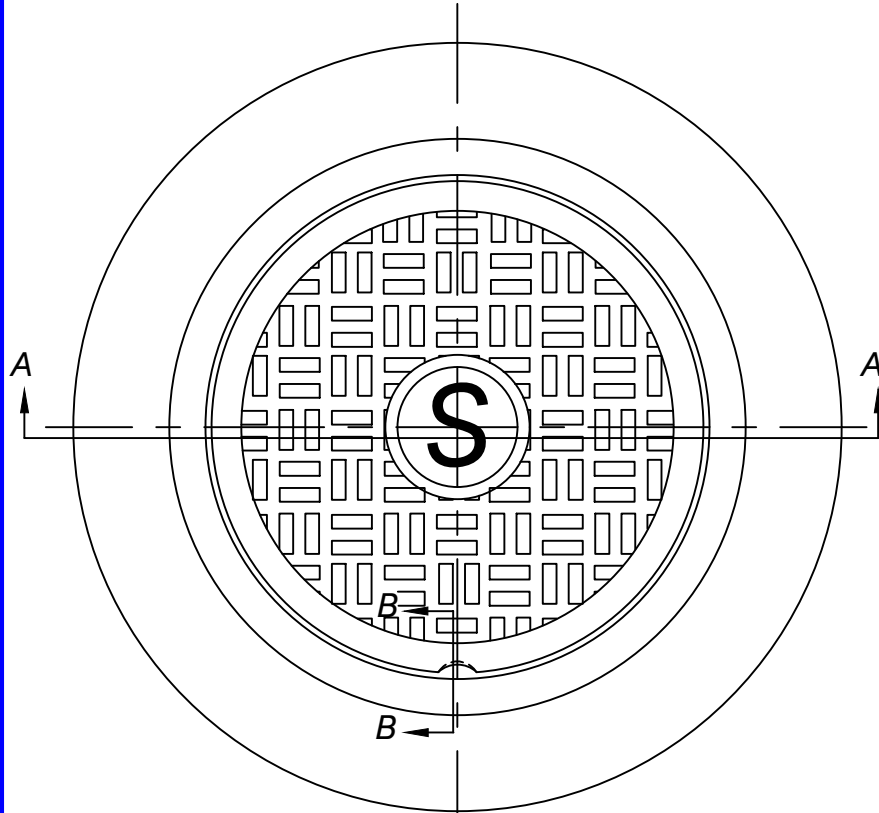
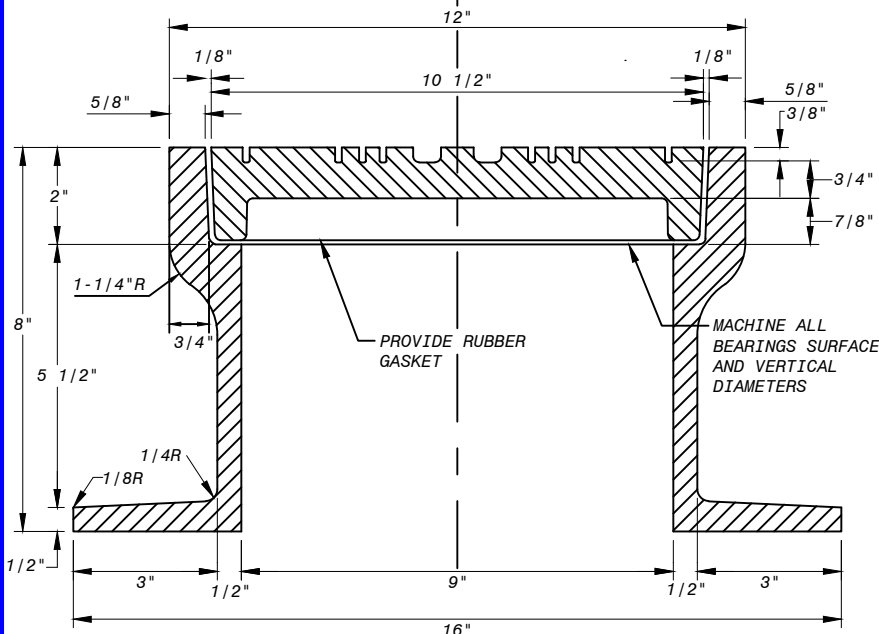


APPLICABLE STOCK NOS.  
 5681 - 9001 - 1  
 5681 - 9002 - 9

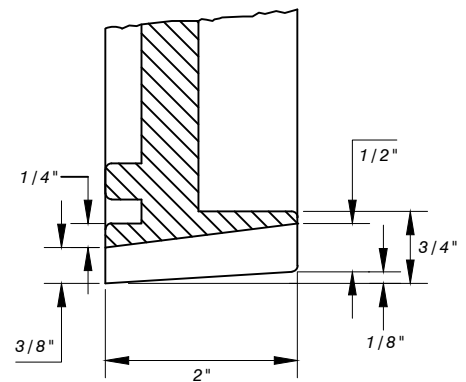


**PLAN**  
 1/4" = 1'

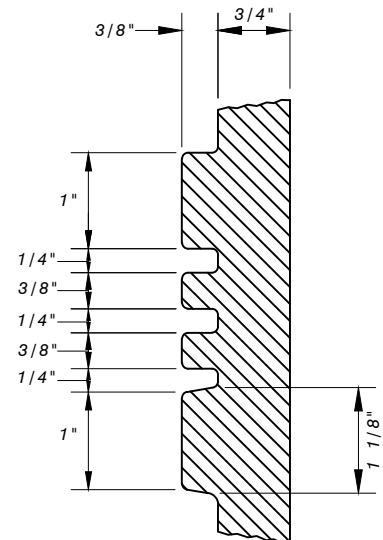


PROVIDE RUBBER GASKET

MACHINE ALL BEARING SURFACES AND VERTICAL DIAMETERS



**SECTION B-B**



**DETAIL OF CORRUGATIONS**

**WEIGHT**  
 COVER - 19 LB. MIN  
 FRAME - 66 1/2 LB. MIN

ALL SECTIONS SHOWN TO BE GRAY IRON CASTINGS, ASTM A-48 CLASS NO. 35B MIN.

NOTE: ALL DIMESIONS ARE ± 1/16".

WASHINGTON  
 SUBURBAN  
 SANITARY  
 COMMISSION

REVISIONS:  
 APPROVED: May 3, 2021 | 9:23 PM EDT

DocuSigned by:  
*Jaime Garcia*  
 B7DBE23469C84BD  
 MATERIALS MANAGEMENT DIVISION MANAGER

PROCUREMENT AND MANUFACTURING DETAIL

**LAMP HOLE FRAME  
 AND COVER**

**P&M  
 5.0**