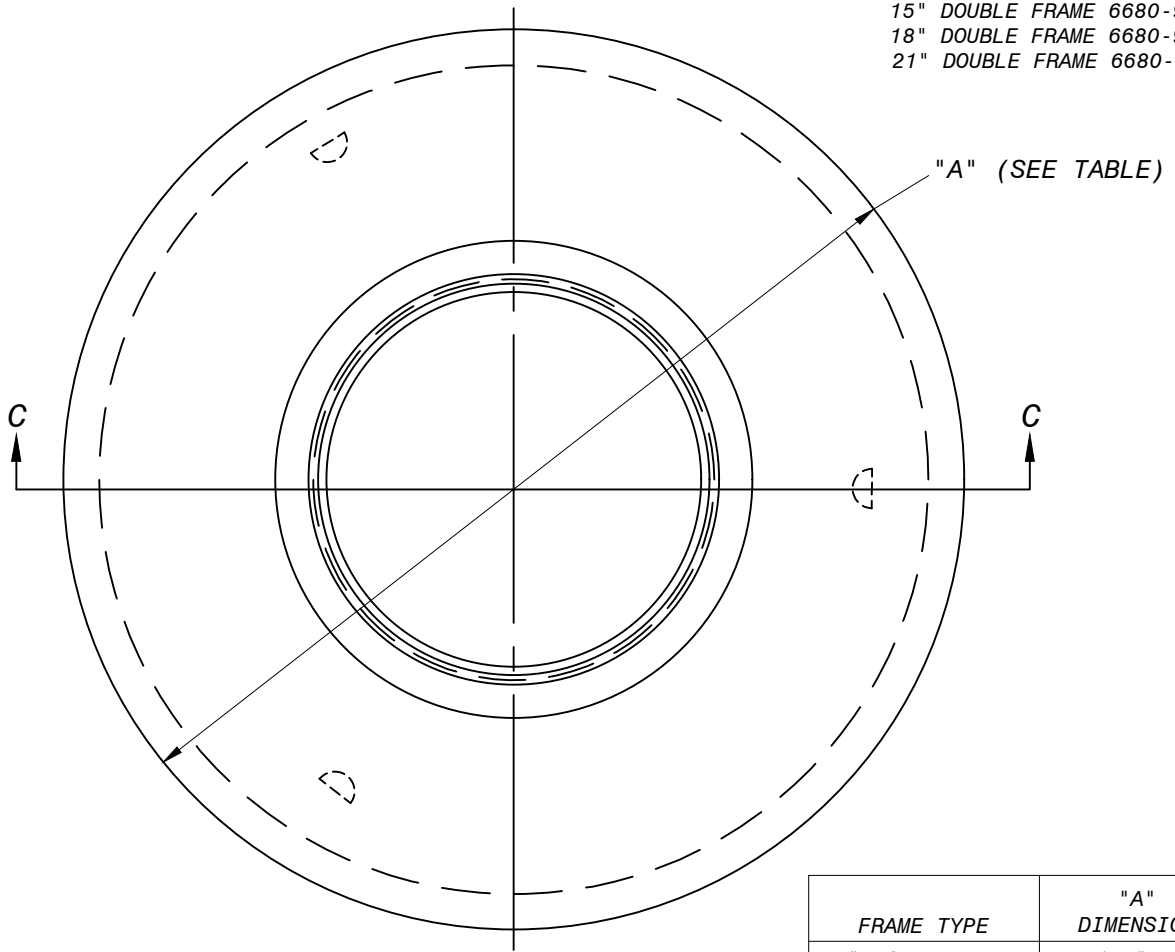
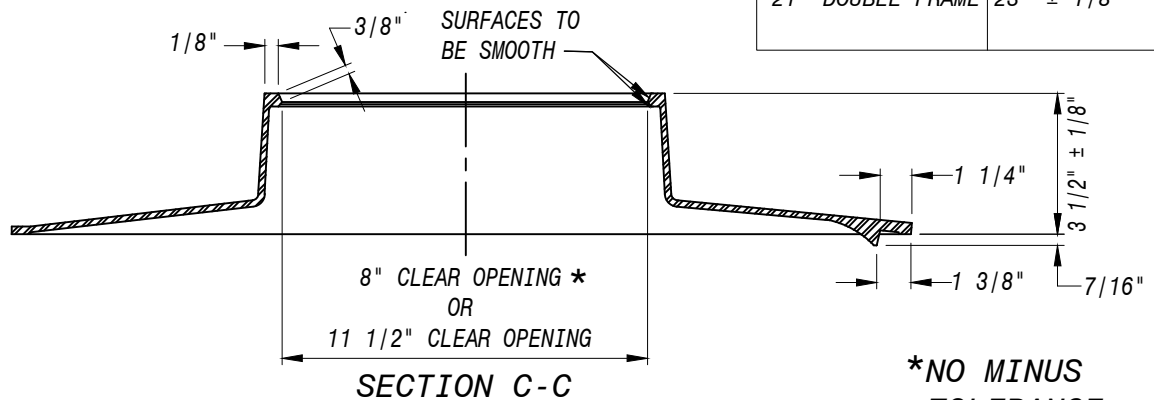


APPLICABLE STOCK NOS.  
 15" DOUBLE FRAME 6680-9040-0  
 18" DOUBLE FRAME 6680-9041-8  
 21" DOUBLE FRAME 6680-9042-6



FRAME TYPE	"A" DIMENSION
15" DOUBLE FRAME	17 5/16" ± 1/8
18" DOUBLE FRAME	20" ± 1/8
21" DOUBLE FRAME	23" ± 1/8



**\*NO MINUS TOLERANCE**

**NOTE:**

1. ALL GRAY IRON CASTINGS TO BE ASTM A-48 CLASS 25 MIN.
2. SEE P&M/4.1 FOR WEIGHTS
3. TOLERANCE OF +/- 1/16" UNLESS NOTED OTHERWISE
4. CASTING SHALL BE CLEANED BY AN APPROVED PROCESS AND COATED WITH AN APPROVED SOLVENT-BASED ASPHALT PAINT.
5. WSSC IS NO LONGER USING METER FRAME "C" TYPE FOR NEW INSTALLATIONS.

WASHINGTON  
 SUBURBAN  
 SANITARY  
 COMMISSION

REVISIONS:  
 APPROVED: May 3, 2021 | 9:23 PM EDT

DocuSigned by:  
  
 B7DBE23469C84B0  
 MATERIALS MANAGEMENT DIVISION MANAGER

PROCUREMENT AND MANUFACTURING DETAIL

**TYPE "C" METER FRAMES  
 FOR 15", 18" AND 21"  
 METER HOUSING**

**P&M  
 4.0**